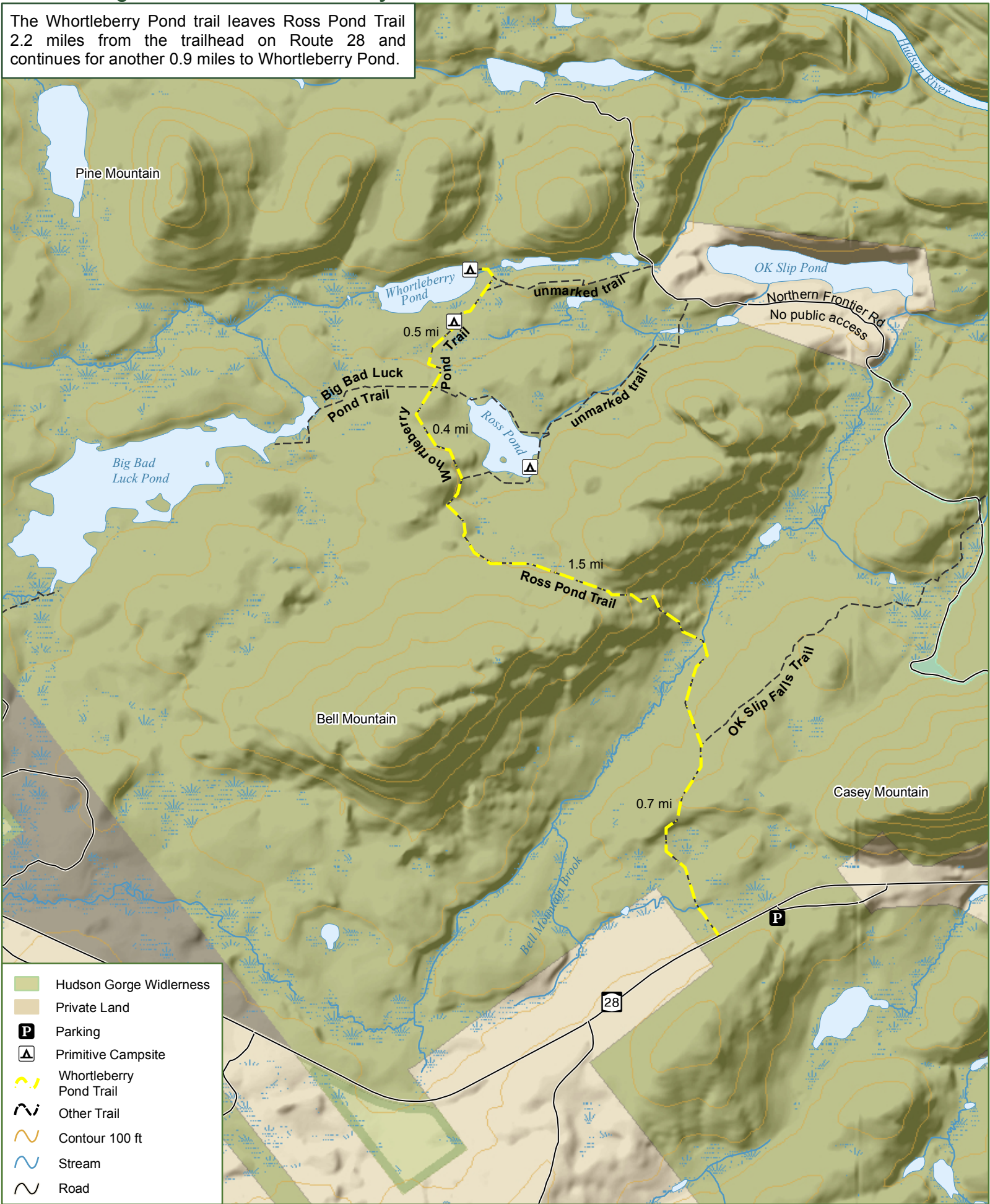


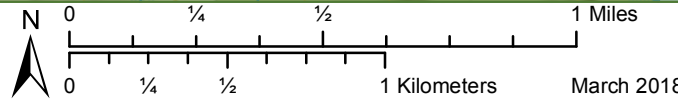
Hudson Gorge Wilderness - Whortleberry Pond Trail

The Whortleberry Pond trail leaves Ross Pond Trail 2.2 miles from the trailhead on Route 28 and continues for another 0.9 miles to Whortleberry Pond.



Department of Environmental Conservation

Please respect private property. Stay on designated trails
 Practice Leave No Trace Principles
 Emergency contact 518-891-0235



March 2018